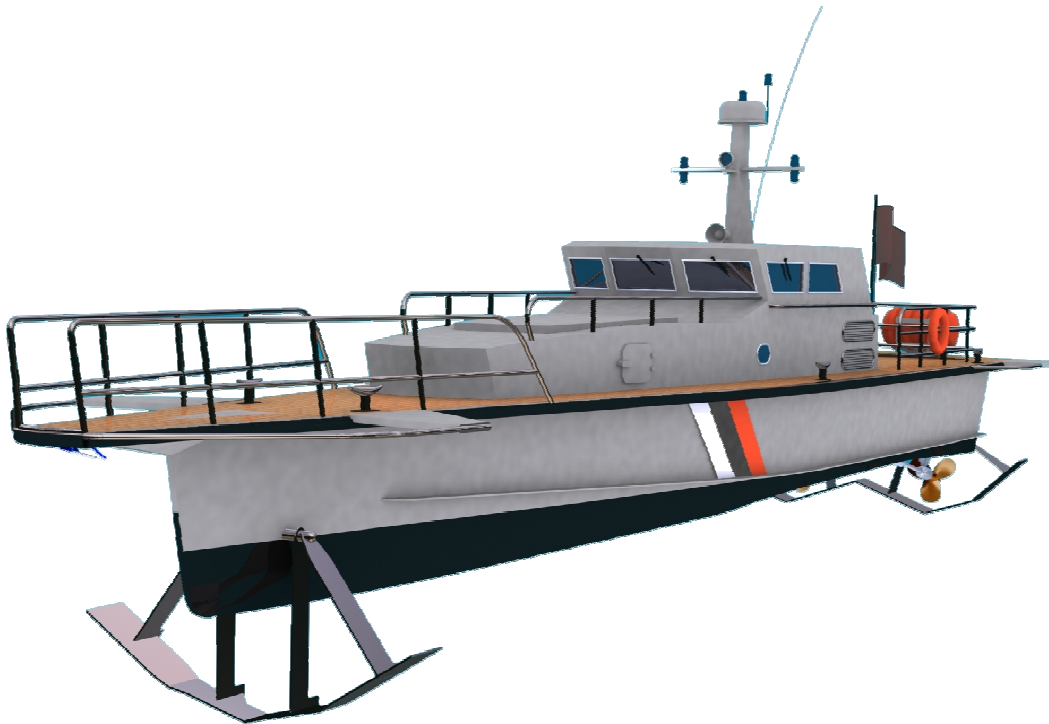


## Fast patrol boat **SEA SPEAR**



Length, <i>m</i>	16,4
Beam, <i>m</i>	3,6
Draught afloat / foils up, <i>m</i>	0,67 / 0,30
Displacement, <i>t</i>	10,5
Crew, <i>pers</i>	1
Range, <i>miles</i>	250
Cruising speed, <i>knots</i>	50
Maximum speed, <i>knots</i>	65
Maximum wave height, <i>m</i>	2,0
Wave height when on the foils, <i>m</i>	0,75
Power, <i>h.p.</i>	2x750

Speed was always a major requirement for naval and coast-guard patrol boats. In recent years, modern Fast Patrol Boats were introduced with cruising capability beyond 50 knots, utilizing various propulsion methods including gas-turbines powered water-jets, hydrofoils, and combined catamaran-air-cushion designs. Patented hydrofoil system.

Seaworthiness, speed, lightweight aluminum construction, engine powering with economical operating characteristics, reliable service and substantially reduced operating costs the "Sea Spear" is dedicated to specialized patrol needs, incorporating the following: coast guard, navy patrol, customs, search and rescue, fisheries protection.