

Hydrofoil

« ALFA - 40 »

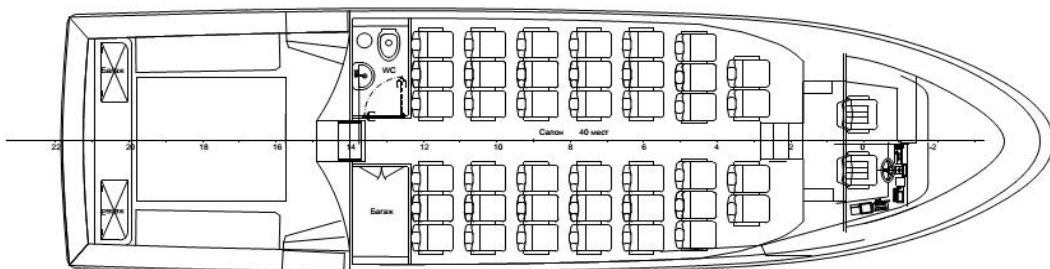
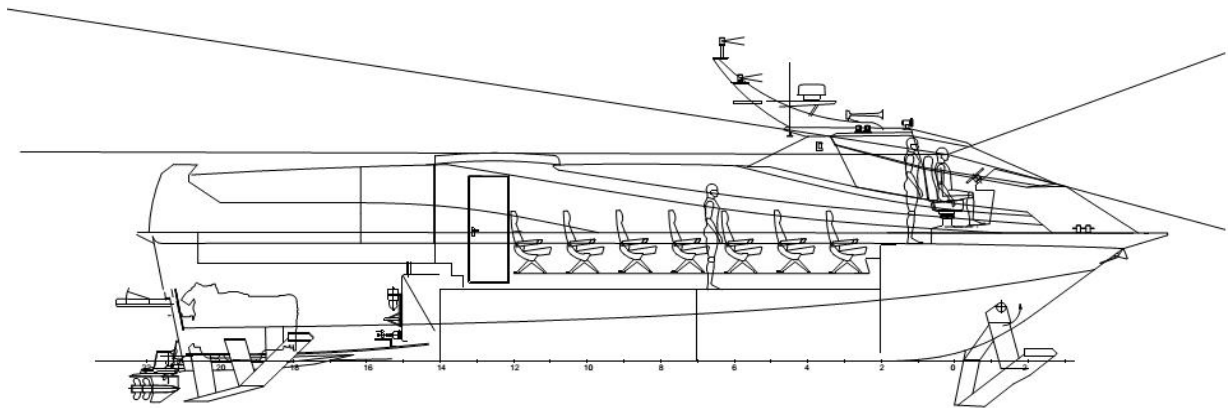
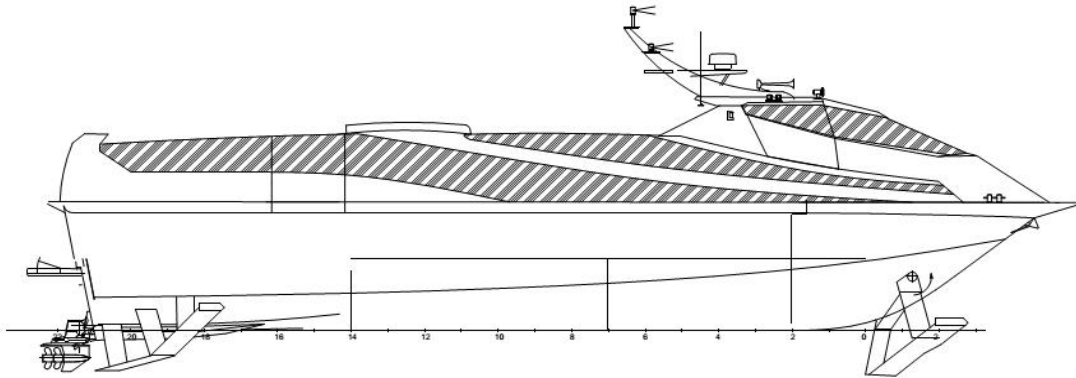


| | |
|--|----------------------|
| Length overall, m | 16,1 |
| Beam transportation, m | 3,9 |
| Depth, m | 2,1 |
| Draught, Foils Up/Down, m | 0,65 / 1,55 |
| Draught in foil operation mode, m | 0,8 |
| Full displacement, t | 15 |
| Engines power max, h.p | 700 (2*350) |
| Engines power cruising, h.p. | 500 (2*250) |
| Maximal speed, km/h | 85 |
| Cruising speed, km/h | 65 |
| Fuel consumption in cruising mode, l /km | 1,5 |
| Range in cruising speed, km | 750 |
| Crew, pers | 2 |
| Passenger capacity, pers | 40 |
| Fuel tanks, l | 1200 |
| Hull/Foils | Al.Alloy / St. Steel |
| Propulsion | Mercuriser Bravo 3 |

Hydrofoil

«ALFA-40»

Plane



Hydrofoil

« ALFA - 40 »



«Alfa-40» is a modern hydrofoil boat with up/down wave piercing type of foils. Platform of the boat can be used for passenger boat, pleasure boat or special service craft.

«Alfa» type hydrofoils with up/down foils has properties unreachable for conventional

hydrofoils. For instance:

- using small depth in Up foil mode,
- load/unload passengers from/on wild beach line,
- smaller then in operation mode beam with Up foils during transportation, storage, mooring,
- easy maintenance and repair process of foils,
- longest life of the foils.

«Alfa» type boats in exploitation (operation) mode are like conventional gliders, but has its fuel consumption (in comparing speed and weight) about twice less then gliders.«Alfa-40» passenger hydrofoil can be delivered full tested and equipped. Boat can be built according Russian or BV classification rules.

Hydrofoil «Alpha 40» passed the test and comes fully ready for use. Serial ship can be build outside Russia.

In the photo - fore and Aft foils in Down and Up modes

